



**MANUFACTURER,
DESIGNER & EXPORTER OF
FOOTSWITCHES,
HAND CONTROLS AND
SWITCHING SOLUTIONS**

 | **HERGA**

CONTENTS

▶ About Us	3
▶ Our Expertise	4
▶ Capabilities	5
▶ Customisation	6
▶ Medical and Healthcare	8
▶ Industrial and Manufacturing	10
▶ Transport	12
▶ Products	14
▶ Application Highlights	28



ABOUT US

Since 1947, Herga Technology has designed and manufactured footswitches, hand controls, pneumatic switches and pressure/vacuum switches. With over 65 employees, we supply switching solutions worldwide to 43 countries, serving renowned brands and global PLCs.

Herga is part of Variohm Group, a £100m cluster of 10 businesses specialising in sensing, switching and motion control technologies. The Variohm Group is owned by discoverIE, a FTSE-250 international group with a £450m turnover that designs and manufactures electronic components for transportation, energy, medical, industrial, and security applications worldwide.

OUR EXPERTISE

We combine robust engineering, regulatory compliance and customer-centred flexibility to deliver solutions that are both reliable and tailored to our customers' needs. From standard parts to bespoke designs, we guide projects from first concept through to production, providing dedicated support throughout the entire lifecycle.

Our approach is rooted in lean manufacturing principles and a commitment to continuous improvement, ensuring we stay ahead of evolving industry demands. At the core of everything we do is rigorous quality control, giving our customers confidence that every product consistently meets the highest standards of performance, safety and reliability.



CAPABILITIES

We offer a comprehensive range of services, enabling customers to move seamlessly from concept to market-ready product. Our capabilities include:

- ▶ **Medical standard manufacturing**
- ▶ **In-house design and engineering**
- ▶ **New product research and development**
- ▶ **3D modelling and rapid prototyping**
- ▶ **Bespoke solutions tailored to customer needs**

CERTIFICATIONS

We build to internationally recognised standards, giving you peace of mind on quality, safety and environmental responsibility.

- ▶ **UL60601-1**
- ▶ **IEC 60601-1**
- ▶ **BS EN 62368**
- ▶ **ISO 9001**
- ▶ **ISO 14001**
- ▶ **ISO 13485**

CUSTOMISATION DESIGNED AROUND YOU

Customising your switches and hand controls ensure they match your exact requirements, improving usability for operators and removing integration headaches before they start.

We can tailor every detail, without compromise:

- ▶ Switches & sensors: Custom shapes, sizes, actuation force and functionality
- ▶ Connectivity: Bespoke cable assemblies and interface options
- ▶ Design flexibility: Branding, colours, and ergonomic requirements
- ▶ Compliance: Certified to meet industry standards

This means faster time-to-market, lower integration cost, low minimum order quantities – and dedicated engineering support throughout the product lifecycle.

STABLE TUBES BALLING
WITH CONCENTRIC RINGS

NO TUBING

STANDARD BALL

FORM STABILIZER





MEDICAL AND HEALTHCARE

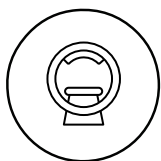
Medical switches and controls are built for critical environments where reliability is non-negotiable. Our UL 60601-1 certified switches meet stringent electrical safety standards for regulated devices. We also offer high-performance switches for medical applications, with features that address factors such as frequent use and hygiene requirements.

Applications include:

- ▶ Instrument function control on dental chairs
- ▶ Cut/coagulation control in electrosurgical generators
- ▶ Pressure monitoring in mechanical ventilators
- ▶ Motion activation in patient chairs, beds and hoists
- ▶ Hands-free multi-function activation in surgical robots
- ▶ Laser activation in medical procedures
- ▶ Microscope axis and function control
- ▶ Control of image capturing equipment including x-ray and MRI



DIAGNOSTICS



EQUIPMENT



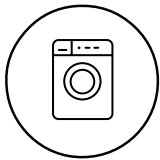
RESEARCH

INDUSTRIAL AND MANUFACTURING

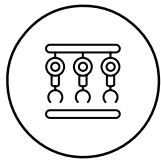
Industrial machinery and heavy-duty manufacturing demand switching solutions that stand up to wear, harsh environments and high loads. We deliver rugged switching and sensing solutions that integrate reliably into industrial environments.

Applications include:

- ▶ Hands-free operation of steel fabrication equipment, textile machines, packaging machines and more
- ▶ Jet stream activation in swimming pools
- ▶ Hydraulic crimping controls
- ▶ Vacuum controls for food-sealing machines
- ▶ Hands-free activation of factory automation
- ▶ Push-to-talk systems in control rooms
- ▶ Pressure control in coffee machines



**DOMESTIC
APPLIANCE**



MANUFACTURING

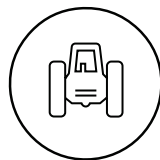




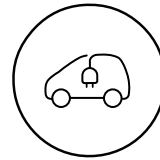
Our durable switching solutions ensure safety and efficiency in vehicles and specialised equipment. Designed for intuitive operation, they make it easy to manage functions and control onboard equipment.

Applications include:

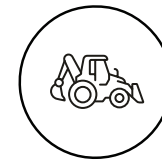
- ▶ Feeder activation in wood-chipping systems
- ▶ Panic button activation for bus drivers
- ▶ Push-to-talk and alarm control on emergency vehicles
- ▶ Controls for special purpose vehicles
- ▶ Autopilot actuation in harvesting machinery



AGRICULTURE



AUTOMOTIVE EV



**SPECIAL PURPOSE
VEHICLES**

PRODUCTS

FOOTSWITCHES



6210-BLE2-XXX

- ▶ UL 60601-1 approved Bluetooth Transmitter
- ▶ Secure PAN (Personal Area Network)
- ▶ Range: Nominally 10 m
- ▶ For use with Herga Bluetooth receivers only - Closed network



6311-BLE2-XXX

- ▶ UL 60601-1 approved Bluetooth Receiver
- ▶ PCB, Dongle and USB receivers
- ▶ Up to 8 functions + 1 x analogue
- ▶ For use with Herga Bluetooth transmitters only - Closed network



6223 SINGLE PEDAL FOOTSWITCH

- ▶ UL 60601-1 approved, front-hinged, non-waterproof footswitch
- ▶ Various colours available
- ▶ SPNO, SPNC or SPDT
- ▶ Cable type, length and connector options



6224 SINGLE PEDAL FOOTSWITCH

- ▶ UL 60601-1 approved, front-hinged, non-waterproof footswitch (IPX7)
- ▶ Various colours available
- ▶ SPNO, SPNC or SPDT
- ▶ Cable type, length and connector options



6225 SINGLE PEDAL FOOTSWITCH

- ▶ UL 60601-1 approved non-waterproof footswitch
- ▶ Various colours available
- ▶ SPNO, SPNC, SPDT, DPNO, DPNC or DPDT
- ▶ Cable type, length and connector options



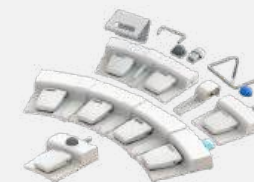
6226 SINGLE PEDAL FOOTSWITCH

- ▶ UL 60601-1 approved waterproof footswitch (IPX7)
- ▶ Various colours available
- ▶ SPNO, SPNC, SPDT, DPNO, DPNC or DPDT
- ▶ Cable type, length and connector options



6241 SINGLE PUCK SWITCH

- ▶ UL 60601-1 approved waterproof puckswitch (IPX7)
- ▶ Various colours available
- ▶ Momentary & latching action, SPNO
- ▶ Cable type, length and connector options



MEDICAL DESIGN MULTI-PEDAL FOOTSWITCH

- ▶ UL 60601-1 approved IPX7 multi-pedal footswitch
- ▶ Electrical, Bluetooth & USB A & C options available
- ▶ Wide range of options including carrybars, LEDs etc.
- ▶ Cable type, length and connector options

PRODUCTS



6241 MULTI-PEDAL PUCK SWITCH

- ▶ Individual puckswitches UL 60601-1 approved
- ▶ Various colours available
- ▶ 1 to 8 pedal switching operations
- ▶ Cable type, length and connector options



6253 POTENTIAL FOOTSWITCH

- ▶ Rugged aluminium heavy duty footswitch
- ▶ Various colour cover or guard options
- ▶ Choice of 5 K and 10 K potentiometer
- ▶ Cable type, length and connector options



6251/2 HEAVY DUTY FOOTSWITCH

- ▶ Rugged aluminium heavy duty footswitch
- ▶ Various colour cover or guard options
- ▶ SPDT, DPDT
- ▶ Momentary or latching action



6255 AIR VALVE

- ▶ Rugged aluminium heavy duty footswitch
- ▶ Various colour cover or guard options
- ▶ Fitted with 5/2 spool valve
- ▶ Maximum operating pressure: 10 Bar

PRODUCTS



6210 SINGLE PEDAL FOOTSWITCH

- ▶ Electrical, Pneumatic & USB A & C options available
- ▶ Various colours available
- ▶ SPDT, DPDT, Pneumatic via airswitches
- ▶ Cable type, length and connector options



6243 SINGLE PEDAL PUCK SWITCH

- ▶ Non-approved 6241 puckswitch with red option
- ▶ SPNO
- ▶ Cable type, length and connector options
- ▶ Waterproof up to IP68



6240 SINGLE PEDAL FOOTSWITCH

- ▶ Round electrical footswitch
- ▶ Various colours available
- ▶ SPNO, SPNC or SPDT
- ▶ Cable type, length and connector options



6254 SINGLE PEDAL FOOTSWITCH

- ▶ Aluminium general duty footswitch
- ▶ Electrical, Pneumatic & USB A & C options
- ▶ SPDT, DPDT, Pneumatic via airswitches
- ▶ Cable type, length and connector options

PRODUCTS



6256 HEAVY DUTY FOOTSWITCH

- ▶ Robust ABS rugged high-performing heavy duty footswitch
- ▶ Electrical / Potentiometer & USB A & C options
- ▶ SPDT or DPDT, Potentiometer 5 K or 10 K
- ▶ Cable type, length and connector options



6221 SINGLE PEDAL FOOTSWITCH IPX7/8

- ▶ Various colours available
- ▶ SPNO, SPNC or SPDT
- ▶ Cable type, length and connector options
- ▶ Guards available



6220 SINGLE PEDAL FOOTSWITCH IPX2

- ▶ Various colours available
- ▶ SPNO, SPNC or SPDT
- ▶ Cable type, length and connector options
- ▶ Guards available



6227 SINGLE PEDAL FOOTSWITCH IPX2

- ▶ Various colours available
- ▶ SPNO, SPNC, SPDT or DPDT
- ▶ Cable type, length and connector options
- ▶ Guards available

PRODUCTS



6228 SINGLE PEDAL FOOTSWITCH IPX7/8

- ▶ Various colours available
- ▶ SPNO, SPNC, SPDT or DPDT
- ▶ Cable type, length and connector options
- ▶ Guards available



6219 SINGLE PEDAL HIGH TEMP FOOTSWITCH IPX7/8

- ▶ Various colours available
- ▶ SPDT or DPDT
- ▶ Cable type, length and connector options
- ▶ Guards available



6229 SINGLE PEDAL HIGH TEMP FOOTSWITCH IPX7/8

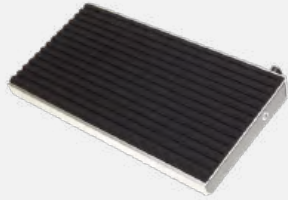
- ▶ Various colours available
- ▶ SPNO, SPNC, SPDT or DPDT
- ▶ Cable type, length and connector options
- ▶ Guards available



6289 SINGLE PEDAL FOOTSWITCH

- ▶ Painted mild steel housing
- ▶ Electrical, Pneumatic & USB A & C options available
- ▶ Cable type, length and connector options

PRODUCTS



6289 SINGLE PEDAL TREADLE FOOTSWITCH

- ▶ Durable long footswitch - 200 mm to 2000 mm length
- ▶ Electrical & USB A & C options available
- ▶ SPDT or DPDT
- ▶ Cable type, length and connector options



GUARDS

- ▶ Mild steel guard
- ▶ Standard colour: Black & grey - custom colours available
- ▶ Single & double pedal & latching guard options
- ▶ Fitted with non-slip feet



6244 HAPTIC PUCK SWITCH

- ▶ Haptic feedback switch
- ▶ Standard colour: Black - custom colours available
- ▶ SPDT or DPDT
- ▶ Supplied with 400 mm flying leads



6773 DOUBLE DIAPHRAGM AIRSWITCH

- ▶ UL/CSA-approved versions available
- ▶ Double diaphragm pressure switch
- ▶ Pressure range up to 600 mbar
- ▶ Temperature compensation option



6861 TO 6869 AIRSWITCH

- ▶ UL/CSA approved versions available
- ▶ Momentary or latching action
- ▶ SPDT or DPDT
- ▶ Various port size & orientation



6871 & 6872 AIRSWITCH

- ▶ UL/CSA-approved versions available
- ▶ Momentary or latching action
- ▶ SPDT or DPDT
- ▶ Various port size & orientation



6891 & 6893 PCB MOUNTING AIRSWITCH

- ▶ UL/CSA-approved versions available
- ▶ Pressure set points: 6891: 15 to 62 mBar
- ▶ Silver & gold contacts
- ▶ Various port size & orientation

PRODUCTS

PRESSURE & VACUUM SWITCHES



6761 & 6763 PCB MOUNTING PRESSURE & VACUUM SWITCH

- ▶ UL/CSA-approved versions available
- ▶ Pressure range: 15 to 1000 mbar
- ▶ Silver & gold contacts
- ▶ Various port size & orientation



6753 PRESSURE / VACUUM SWITCH

- ▶ UL/CSA-approved versions available
- ▶ Pressure range 5 to 40 mbar
- ▶ N/O or N/C
- ▶ Temperature compensation option



HPS-500/1/2/3 PRESSURE / VACUUM SWITCH

- ▶ UL approved
- ▶ Pressure range: 0.25 to 1370 mBar
- ▶ Various port & mounting options
- ▶ Temperature compensation option



HPS-600/1/2 PRESSURE SWITCH

- ▶ UL approved
- ▶ Pressure range: 1.25 to 4144 mBar
- ▶ SPDT or DPDT
- ▶ Various thread size & port orientation



6731 & 6732 LOW PRESSURE SWITCH

- ▶ UL/CSA-approved versions available
- ▶ Pressure range: 4 to 137 mbar
- ▶ SPDT or DPDT
- ▶ Various port options available



HPS-600/1/2 VACUUM SWITCH

- ▶ UL approved
- ▶ Pressure range: 5 to 964 mbar
- ▶ SPDT
- ▶ Various port options available



6741 & 6742 MEDIUM PRESSURE SWITCH

- ▶ UL/CSA-approved versions available
- ▶ Pressure range: 100 to 8270 mbar
- ▶ SPDT or DPDT
- ▶ Various thread size & port orientation



6721 & 6722 VACUUM SWITCH

- ▶ UL/CSA-approved versions available
- ▶ Pressure range: 7.5 to 670 mbar
- ▶ SPDT or DPDT
- ▶ Various port orientation

PRODUCTS

PNEUMATIC BUTTONS & BELLOWS



6438 MINI PUSH BUTTON SWITCH

- ▶ Panel mount mini push button
- ▶ Various colours available
- ▶ Use with Herga airswitches
- ▶ 2 mm & 4 mm spout option



6431 & 6439 BELLOW

- ▶ Side or base entry bellows
- ▶ Various colours available
- ▶ Use with Herga airswitches
- ▶ Various tubing lengths



6442 LARGE PUSH BUTTON SWITCH

- ▶ Panel mount large push button
- ▶ Plastic or metal facia
- ▶ Use with Herga airswitches
- ▶ 2 mm & 4 mm spout option



6433 PANEL MOUNT BELLOWS

- ▶ Large panel mount bellows
- ▶ Various colours available
- ▶ Use with Herga airswitches
- ▶ 4 mm spout



6447 TWIN FOOT BELLOW

- ▶ Twin pneumatic bellows
- ▶ Various colours available
- ▶ Use with Herga airswitches
- ▶ Various tubing lengths



6449 SQUEEZE GRIP BELLOW

- ▶ Large soft pliable PVC bellow
- ▶ Black or clear tubing
- ▶ Various tubing lengths
- ▶ Sensitive activation



6448 SINGLE FOOT BELLOW

- ▶ Large pneumatic bellows, side or base entry
- ▶ Various colours available
- ▶ Use with Herga airswitches
- ▶ Various tubing lengths

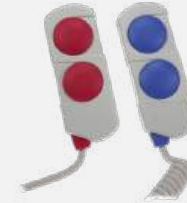
PRODUCTS

HAND CONTROLS



6450 PNEUMATIC HAND CONTROL

- ▶ Pneumatic double bellow hand control
- ▶ Various colours available
- ▶ Various tubing lengths
- ▶ Various mounting options



6271 ELECTRICAL HAND CONTROL

- ▶ Electric dual button hand control
- ▶ Various colours available
- ▶ Cable type, length and connector options
- ▶ Mounting hook available



6451 PNEUMATIC HAND CONTROL

- ▶ 2, 4 & 6 way pneumatic hand control
- ▶ Various colours available
- ▶ Various tubing lengths
- ▶ Various mounting options



6310 PNEUMATIC HAND CONTROL

- ▶ 2, 4 & 6 way pneumatic hand control
- ▶ Various colours available
- ▶ Various tubing lengths
- ▶ Various mounting options



6310 ELECTRICAL HAND CONTROL

- ▶ 2 – 8 button electric hand control
- ▶ Custom design front foils
- ▶ Cable type, length and connector options
- ▶ Various mounting options



6311 INFRA-RED RECEIVER

- ▶ 1 – 8 channel infra-red receiver
- ▶ Supplied with integral receiver
- ▶ Line of sight operation
- ▶ Use with 6310 Infra-red transmitter



6310 INFRA-RED HAND CONTROL

- ▶ 1 – 8 channel infra-red hand control
- ▶ Custom design front foils
- ▶ Line of sight operation
- ▶ Use with 6311 Infra-red receiver



6461 IR CONTACTLESS SWITCH

- ▶ Infra-red non contact switch
- ▶ Plastic and metal variants
- ▶ Relay or open collector transistor output & timed delay relay output
- ▶ Sensing range 75 – 100 mm (nominal)



ENHANCING PRECISION, SAFETY AND EFFICIENCY IN CANCER TREATMENT

Our custom hand control with emergency stop and deadman switch ensures patient-centric positioning and enhanced safety.



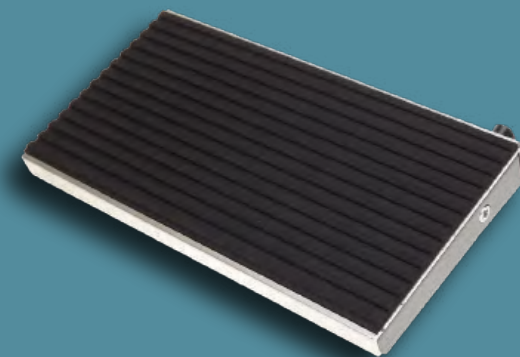
KEEPING MEDICAL EXPERTS HAND-FREE

Our customisable Bluetooth medical footswitches provide medical experts with the control to complete the procedure safely.



OPTIMISING RESPONSE EFFICIENCY IN CONTROL ROOMS

Herga footswitches allow control room staff to use their feet to operate 'push to talk'. This keeps their hands free to maximise their effectiveness in dealing with emergencies.



ROBUST SAFETY SWITCHES FOR HARSH ENVIRONMENTS

Ensuring user safety with reliable and robust cut-off switches for industrial machinery.





HERGA



+44 (0) 1284 701 422



sales@herga.com



www.herga.com

